

A Message from the CEO

Our network of child care resource and referral member organizations are on the front line of meeting the child care needs for families in Ohio. The network supports families, providers, and professionals by building capacity and quality to strengthen child development across the industry. Families searching for child care contact our network to receive the most up to date information on availability and locations for their family. The network provides business operations resources, staff training, professional development, and technical assistance to providers and professionals in all 88 counties. OCCRRA provides statewide coordination and supports the network ensuring our statewide goals are positively impacting children, families, and communities. Visit our website to find the organization serving your region, www.occrra.org.

Chris Angellatta, Ph.D.

Financials

| Sources | Percent | Distribution | Percent |
|----------------------------|----------|-------------------------|----------|
| Grants from Government | 99.741% | Programs | 6.142% |
| Foundations/Local Sponsors | 0.108% | Programs - Pass Through | 93.709% |
| Assessments and Dues | 0.039% | Management and General | 0.142% |
| Other | 0.111% | Advocacy | 0.007% |
| Total | 100.000% | Total | 100.000% |

Our Funding and Collaboration Partners



OCCRRA enhances the statewide system of child and youth learning and development experiences to achieve high quality outcomes for Ohio children and families. We accomplish our mission by:

- Supporting Ohio’s network of Child Care Resource & Referral agencies
- Collaborating with other networks and partners
- Implementing statewide programs that improve service quality
- Advocating for policy improvements

Visit us today at www.occrra.org

For additional information:

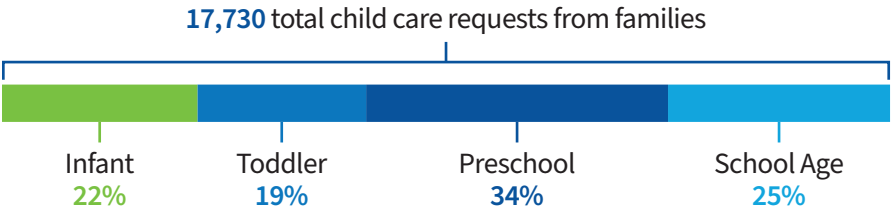
Phone: 614-396-5959
Address: 2469 Stelzer Road, Columbus, OH 43219



Resource and Referral Work

Families request support from their local resource and referral organizations to navigate child care options that best meet their needs.

Requests by age group



Requests by Program Type



Program Development

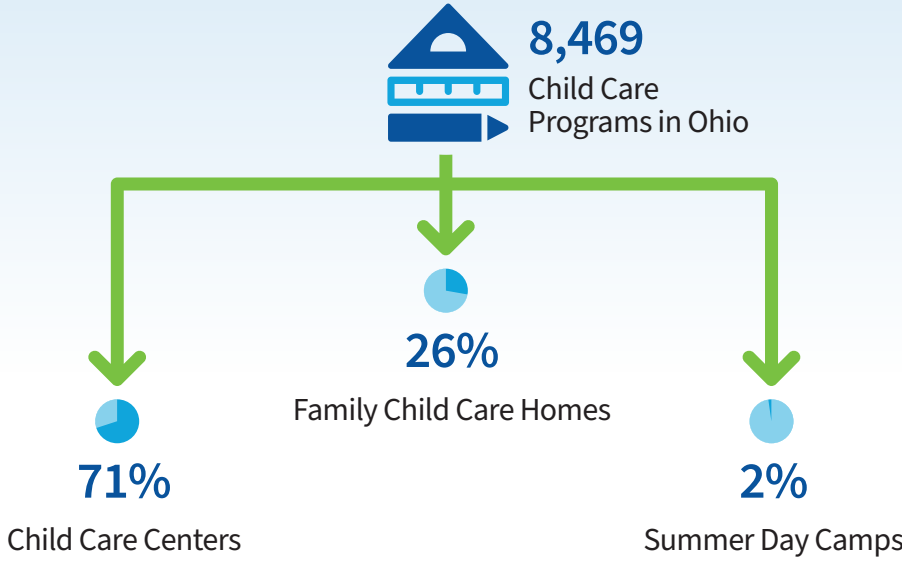
635 child care programs with a maximum capacity of 30,578 were licensed in 2024.

Programs need technical assistance to build and develop high quality outcomes for children. 85% of quality rated programs maintained or increased their quality rating based on the Step Up To Quality three-tier rating system.

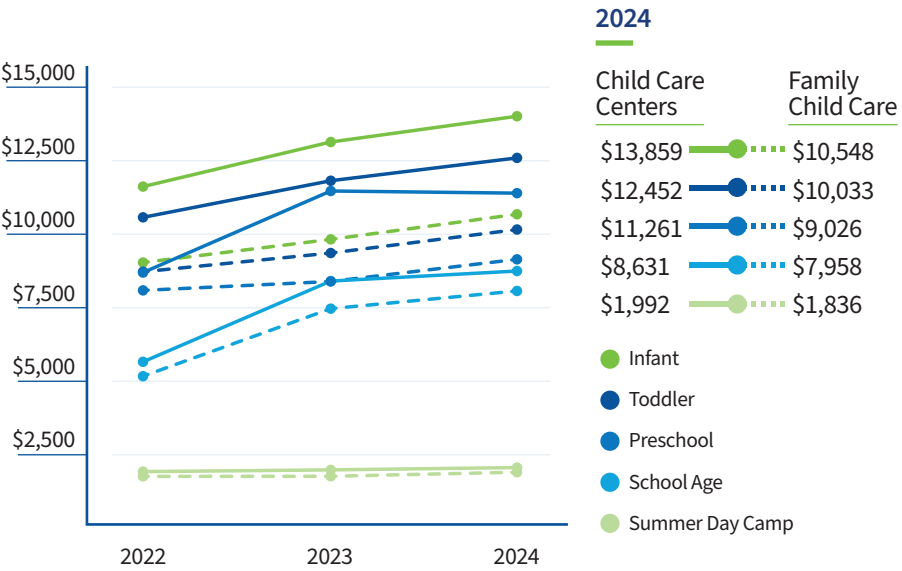


All statistics used in this report are specific point in time references as collected by OCCRR.

Child Care in Ohio



Average Cost of Child Care in Ohio



Since 2019 child care costs have increased by 25%

Scholarship Success Story

I personally never thought that I'd have the opportunity to get such an amazing college education and degree. TEACH gave me that opportunity. By obtaining additional education, my daily work and interactions with the children and their families is impacted positively. I am able to use my knowledge to benefit the classroom and each child and their family. – Gabriella Gonzalez



Child Care Workforce Supports

OCCRR and the resource and referral network design and deliver training and professional development opportunities for the workforce.

Ohio Professional Registry

Families across the state need child care to enter the workforce or return to the office. Expanding the child care workforce is critical to supporting working adults and preparing children with social and academic skills to be successful in life. We continue to build the child care workforce pipeline to meet these needs.

137,114 child-serving professionals using the Ohio Professional Registry.

9117 Unique trainings offered in 2024

607,271 Trainings completed in 2024



The Ohio Professional Registry (OPR) empowers and enables individuals to take charge of their professional growth and development. The OPR has 14,188 different trainings for child serving professionals to enhance their knowledge and skills.

Topics include:

- Child Growth and Development
- Administrator Essentials
- Program Development and Evaluation
- Continuous Quality Improvement
- Home Visiting Core Competencies
- Family Engagement



Professional development is provided for center-based and family child care professionals, resource and referral specialists, early intervention service coordinators, early childhood mental health specialists, and home visitors.

Credentials and Endorsements Completed

| | |
|--|---|
| 64 Early Childhood Mental Health | 1,987 Ohio PROMISE (Children with disabilities) |
| 158 Early Intervention Service Coordinator | 793 School Age Endorsement |
| 600 Home Visitor | 1,122 Trauma Informed Care |
| 152 Infant Mental Health | 2,997 Science of Reading Completions |

Scholarships and Support

| | |
|---|--|
| TEACH scholarships and POWER financial supports support child care professionals pursuing post-secondary education. TEACH scholars are in the child care workforce 55% longer than their peers. | 1,076 TEACH Ohio Scholarships Awarded |
| | \$1,785 Average TEACH Scholarship Amount |
| | 1,515 POWER Ohio Recipients |

51,107 | Children Served by TEACH and POWER Employees